

4 3 2



# Cheapside Road, *Ascot*

OSBORNE HEATH

# SHORT LET- An individual, gated four bedroom detached house with a roof terrace looking towards Windsor Great Park.

On the ground floor there is a modern kitchen with living and dining space, a utility and storage.

On the first floor there is a living room with vaulted ceiling and doors out to a large roof terrace, study/family room, bedroom and a shower room.

The top floor has three bedrooms, a bathroom and a second roof terrace.

Outside there is an in-out driveway with gates at both ends, carport and a garden.

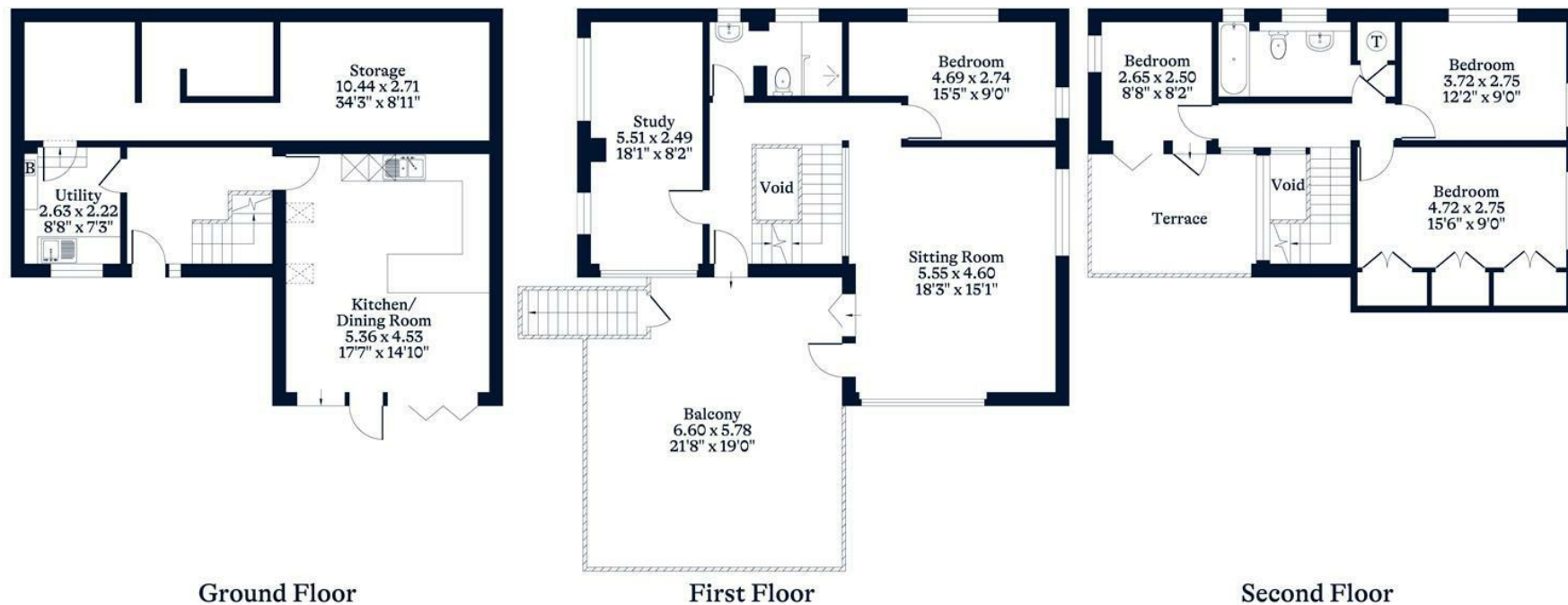
Stoneleigh is on Cheapside Road, in the small village of Cheapside, Ascot. Nearby schools include Charters, Cheapside, Holy Trinity, The Marist and St Francis. Local places of interest include Ascot Racecourse, Coworth Park, Guards Polo Club, Legoland, Sunningdale Golf Club, Virginia Water Lake, Wentworth Club and Windsor Great Park. The station in Ascot runs trains to London Waterloo, Guildford and Reading. Cheapside is also convenient for the M3, M4, M25 and Heathrow Airport.

EPC Rating D. Deposit £5,769. Holding Deposit £1,153. Short Term Lease Length 2-5 months. Council Tax G. Bills Included.









Approximate Gross Internal Area 192.80 sq m - 2075 sq ft

This plan is for illustration purposes only and not drawn to scale unless stated. Windows and door openings are approximate. Whilst every care is taken in the preparation of this plan, please check all dimensions before making any decisions reliant upon them.

© OSBORNE HEATH